

# CENTRAL FLORIDA DEVELOPMENT COUNCIL TAMPA BAY ECONOMIC DEVELOPMENT COUNCIL

## AFZA Mission

SEPTEMBER 14-16, 2022



Polk County's Economic  
Development Partnership

# FLORIDA *within* REACH

 **10+**  
**MILLION PEOPLE**  
WITHIN 100 MILES



A vertical collage of industrial images on the left side of the slide. From top to bottom: two yellow robotic arms welding a metal part with sparks; a large, blue, ribbed dome structure; a complex industrial machine with many pipes and valves; and a close-up of green plants with small orange fruits. At the bottom left is a white circular logo containing a stylized map of Florida.

# REGIONAL OVERVIEW

*Industrial Buildings Only*

*Industrial Buildings*

**17.340**

*Square Footage*

**44 Million m<sup>2</sup> Existing**

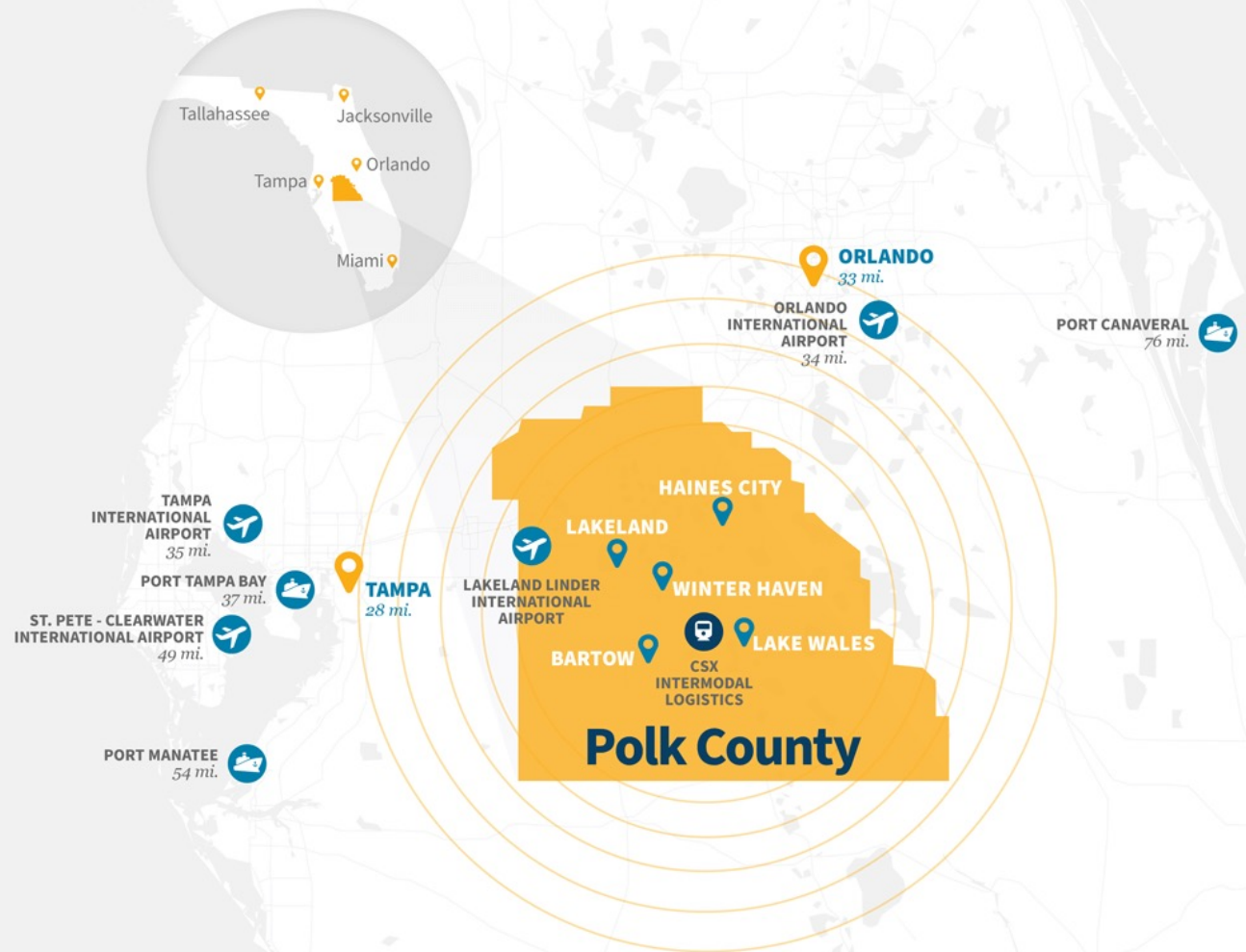
*New Construction*

**151 Buildings/ 2,3 Million m<sup>2</sup>**



# ADVANTAGES

## *Foreign Trade Zone #79*

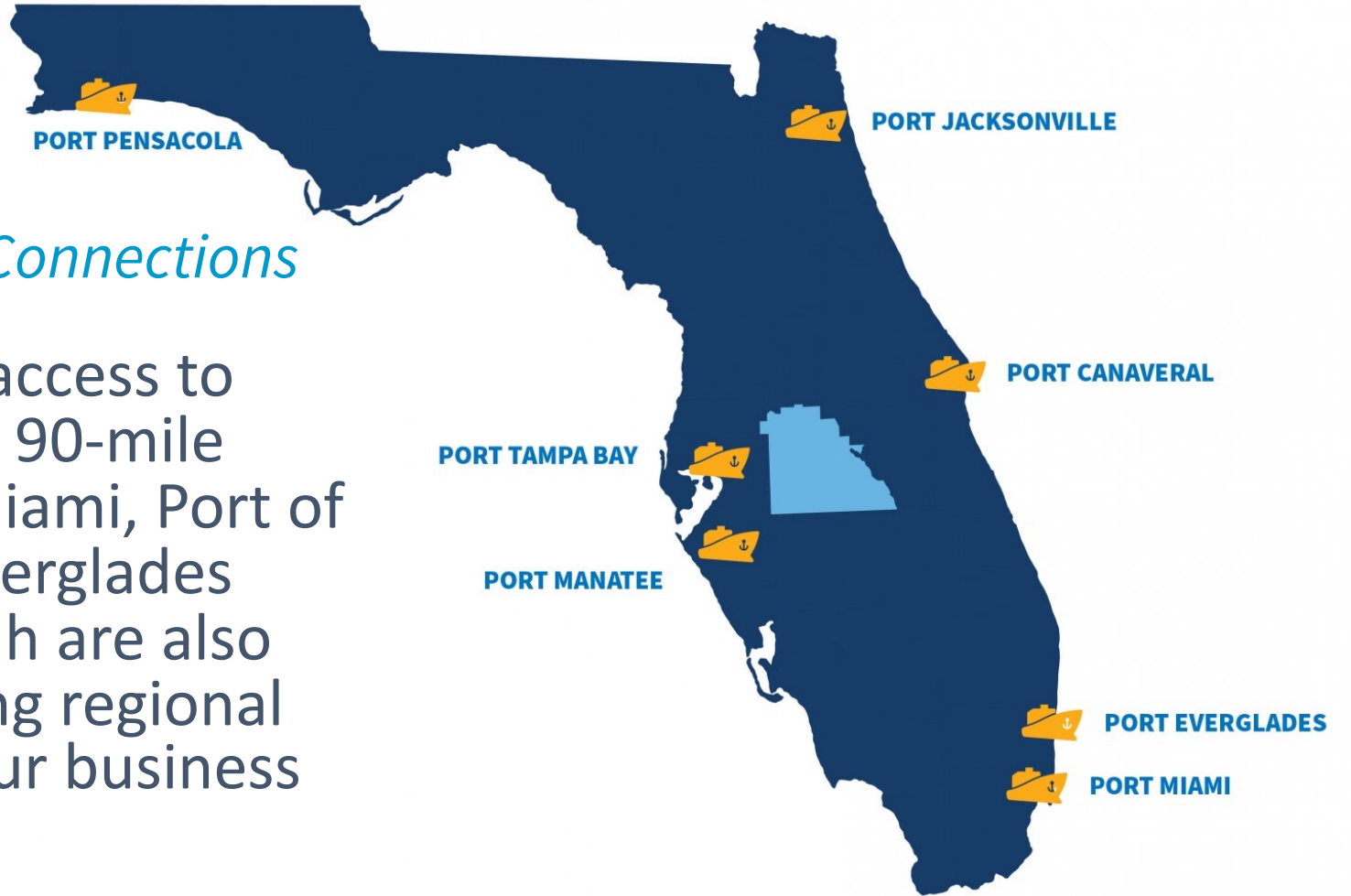




# Connectivity

## *Build Deep Blue Sea Connections*

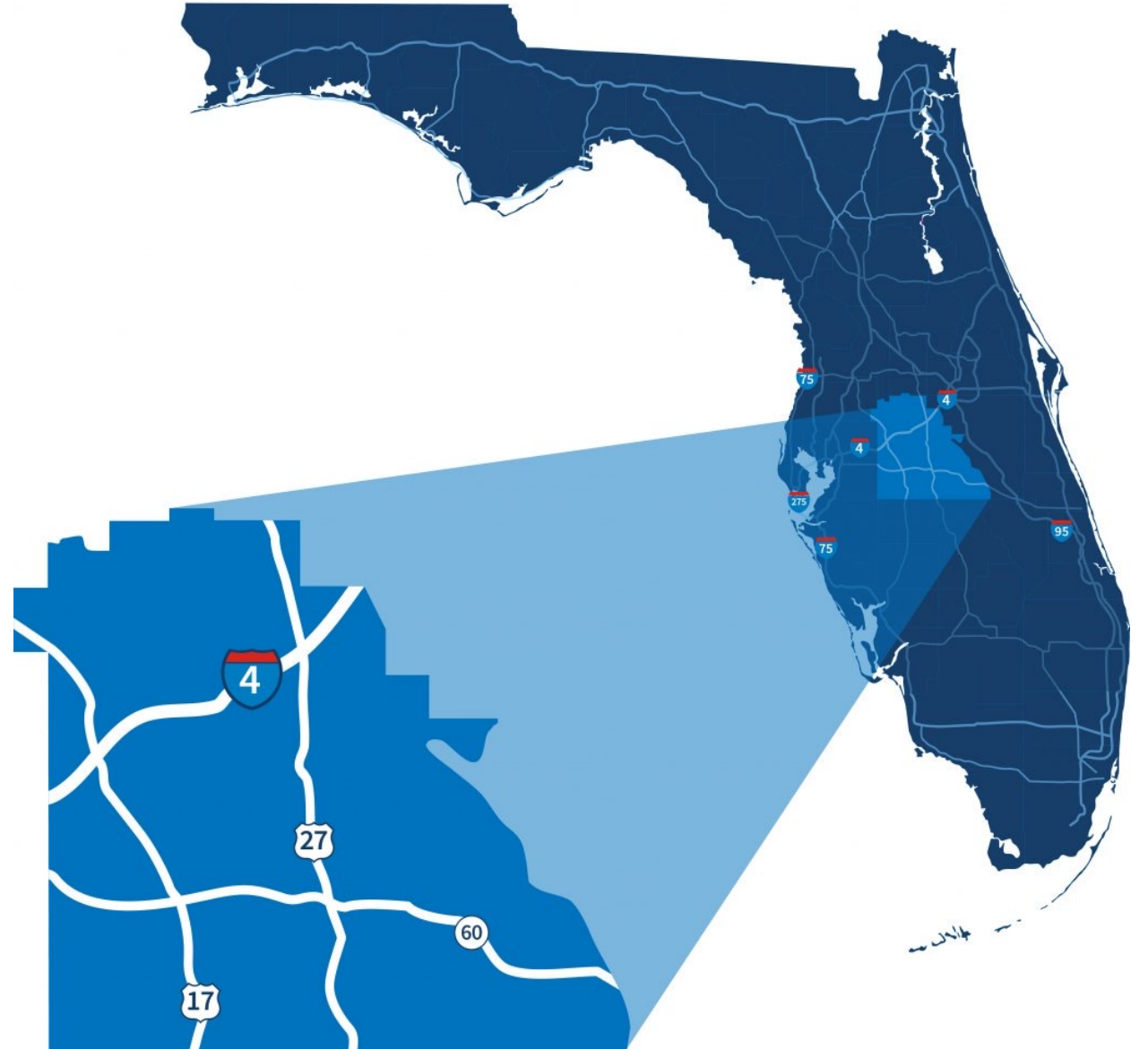
Central Florida has access to three ports within a 90-mile drive. The Port of Miami, Port of Jacksonville, Port Everglades and Port of Savannah are also within reach, offering regional access wherever your business needs it.



# CONNECTIVITY

## *Roads to Success*

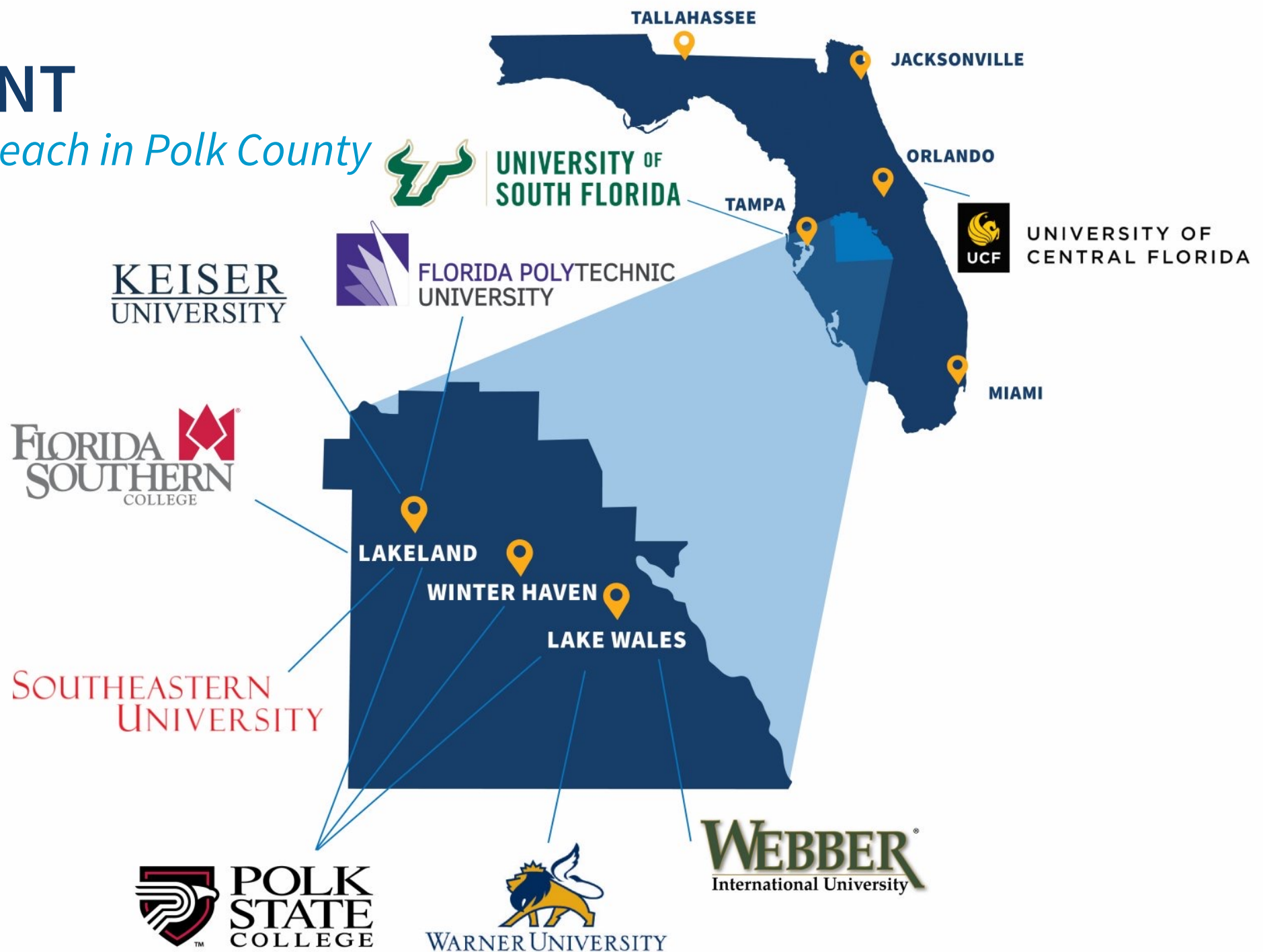
Polk County is in close proximity to major roadways, intersected by Interstate 4, the Polk Parkway, State Road 60 and U.S. Highway 27 with easy access to Interstate 75 on the west and Interstate 95 on the east.





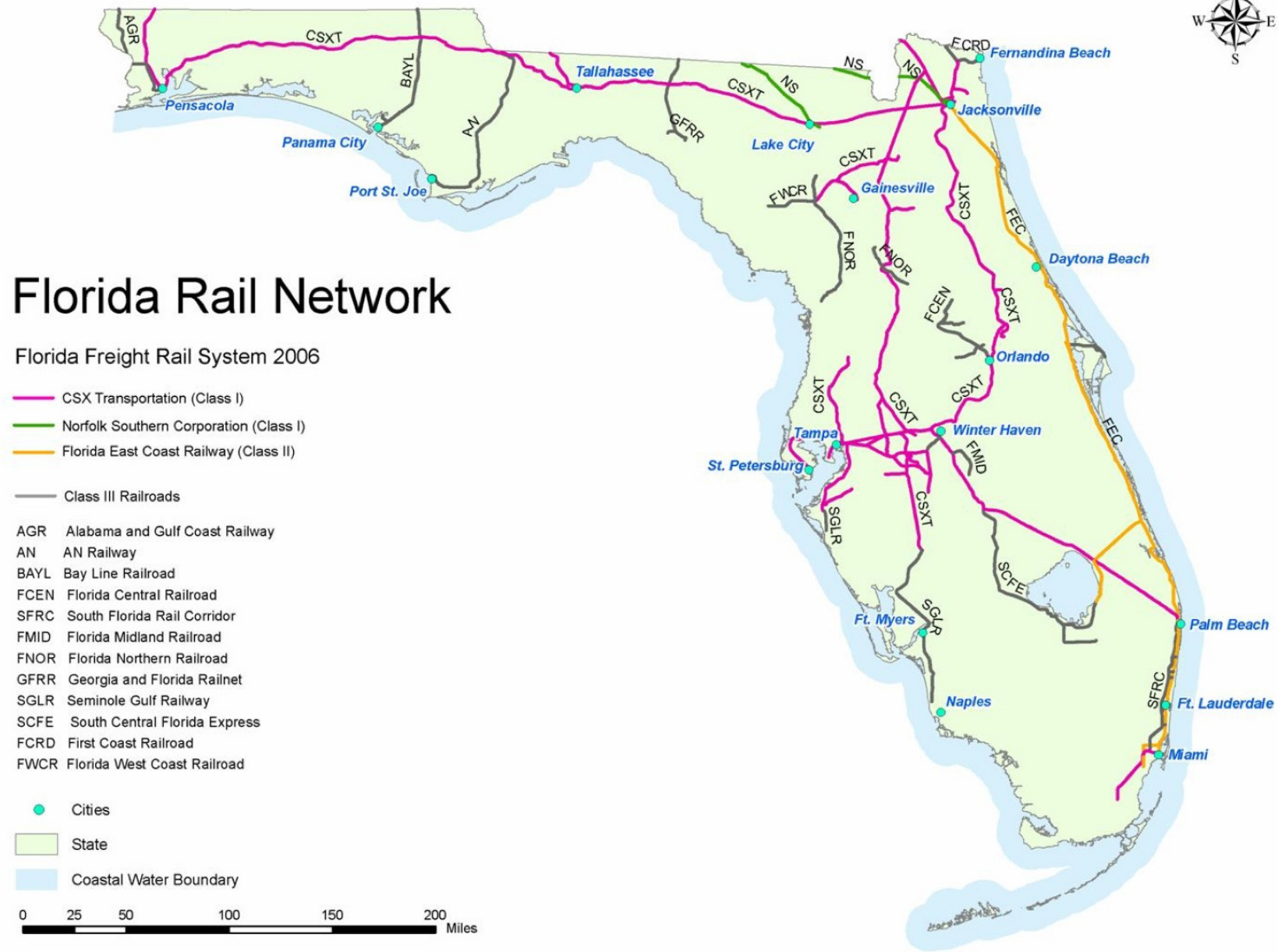
# TALENT

*Within Reach in Polk County*



# CONNECTIVITY

## Rail





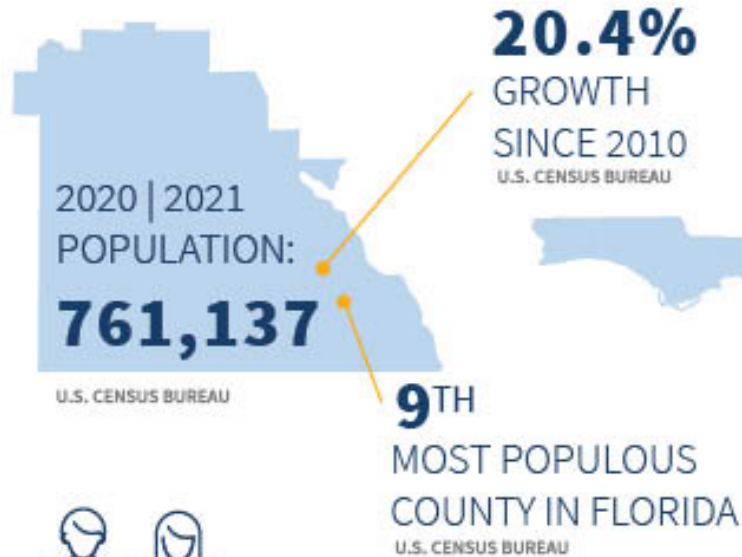
# CRITICAL INFRASTRUCTURE

## *Brightline*

- High speed rail to connect South Florida to Tampa Bay
- Mass transit – air, rail & bus
- Expand roadway infrastructure
- Support growing population base



# POLK BY THE NUMBERS



**3.6% UNEMPLOYMENT RATE**

July 2022, Bureau of Labor Statistics

## COUNTY JOB GROWTH BY INDUSTRY

SEP. 2020 - SEP. 2021, FLORIDA DEO



**#1  
FASTEST-GROWING  
COUNTY IN FLORIDA**



**#5 IN THE NATION**  
U.S. CENSUS BUREAU

**4TH BEST STATE TO START A BUSINESS**

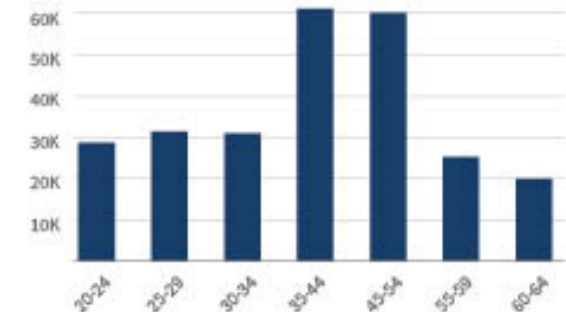
WALLETHUB

**9TH  
BEST TALENT  
ATTRACTION  
MARKET**

EMSI BURNING GLASS

## COUNTY LABOR FORCE BY AGE

FLORIDA DEO



**3RD BEST STATE FOR MANUFACTURING**

BUREAU OF LABOR STATISTICS

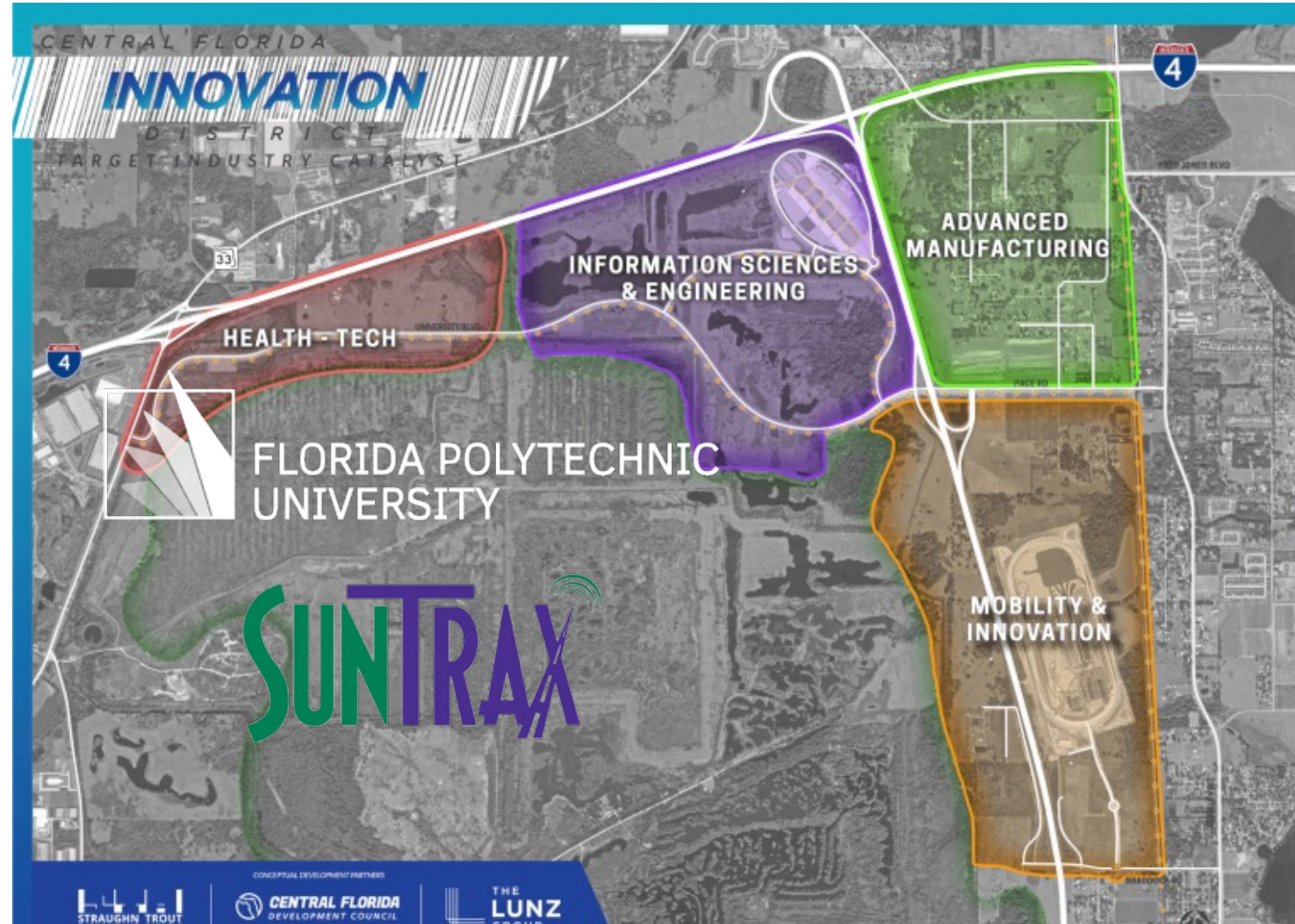




# LOCAL OPPORTUNITIES

## *Central Florida Innovation District*

- Anchors Florida Poly & SunTrax
- Future research park
- Potential \$5.2B economic impact
- 4.3 additional jobs for each stem job
- Central location for state and county





# TRANSFORMATIONAL DEVELOPMENTS

## MIDTOWN TAMPA



## SKYCENTER ONE





# TRANSFORMATIONAL DEVELOPMENTS

## ARMATURE WORKS / HEIGHTS UNION



## WATER STREET TAMPA







*"We wanted to move to the heart of the marine business. We really felt that Tampa would offer us all the things we were looking for. It was a great place to attract future workers and just had a lot to offer."*

**- Gus Blakely – Suzuki Marine, Executive Vice President**





*"Relocating our headquarters to Tampa is an incredible milestone that not only signals rapid growth but also our commitment to providing the best-in-class infrastructure protection to our global customers. While San Francisco will continue to be a strategic office location given its proximity to Silicon Valley and our West Coast partners and customers, we are excited to strengthen our East Coast presence and join Tampa's emerging technology and cybersecurity ecosystem."*–

***Benny Czarny, CEO***





*As we looked across the different variables that were part of the decision-making process, in many respects, Tampa Bay was an easy choice for us based on our criteria. Our experience at this point has been outstanding. There's a lot of interest in Pfizer and an opportunity to build, to be a part of something new."*

***-Brian Martin, Pfizer US Site Lead***





*"The people who are aware of it [Tampa] are incredibly impressed, and it's incredibly attractive. Before we started our search, we might not have put it at the top of our list, but I would say its momentum is moving along incredibly fast."*  
- **Cory Thomas, Rapid7 CEO**



# RAPID7





*"They [our employees] asked me what I like about Tampa. I think it's the Midwest feel ... sense of community. It's intangible. It's exciting to learn about Tampa's diverse millennial workforce and new developments coming out of the ground, such as those in Water Street Tampa. The move is significant for the company with more than 80 manufacturing facilities and over 7,000 employees worldwide."*

**- Robert Bourque – Signode, President**





# **THANK YOU!**

## **Find Your Florida Within Reach in Central Florida**

**Javier Marin, Central Florida Development Council**

**Steve Morey, Tampa Bay Economic Development Council**



**CENTRAL FLORIDA**  
DEVELOPMENT COUNCIL

| Polk County's Economic  
Development Partnership