



# Welcome Aboard



Jorge Hernández  
Director  
Business Development



# Port Everglades Overview

## Enterprise Fund of Broward County Government

- Operations are supported 100% by user fees; no local taxpayer dollars

## Landlord Port

- We DO develop and lease land + facilities
- We DO NOT operate terminals or handle cargo

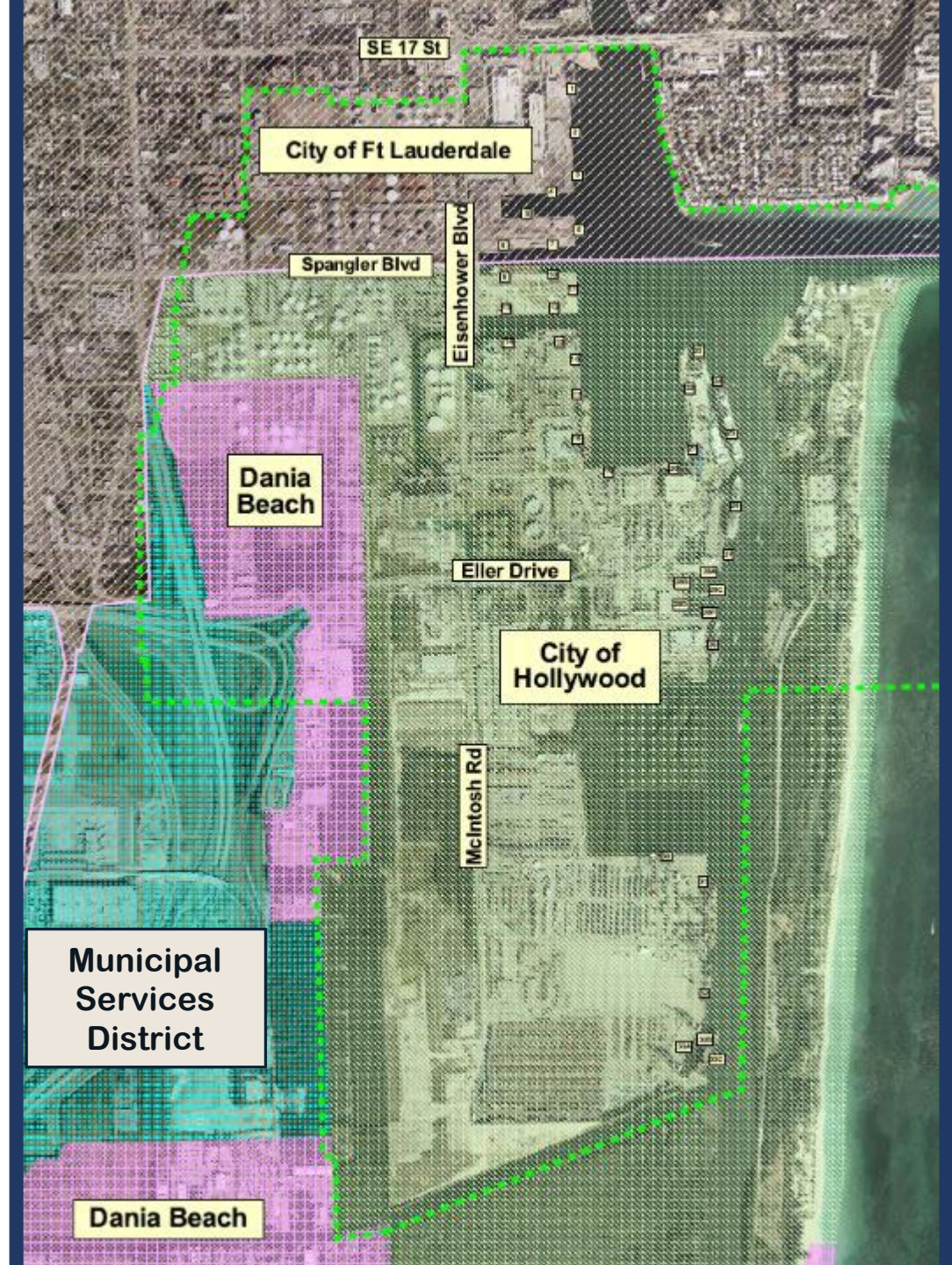


# Jurisdictional Area

- Hollywood
- Fort Lauderdale
- Dania Beach

Direct access to:

- I-95
- I-595
- I-75
- Florida Turnpike



# Key Elements

## Our Mission

Port Everglades works creatively and competitively to expand the revenue positions of our trade, cruise and energy customers, which in turn creates economic social and environmental value for our community.

## Our Vision

Port Everglades is prosperous and sustainable due to innovative multimodal trade and travel partnerships, strategic business diversifications, and focused investments fueling vigorous growth.

# Economic Powerhouse

(FY2021)

- \$30.5 billion in business activity
- \$1 billion in state & local taxes
- 7,013 direct jobs
- 206,255 Florida jobs supported, earning \$8.5 billion in wages



# Port Everglades By The Numbers FY2021



## Cargo

### Containerized:

- 1,038,179 TEUs
- 1,674 ship calls

### Car Carriers/Yachts/Boats:

- 72,381 pure car carrier units
- 45,674 tons

Ranked #1 Perishables and  
#3 Containerized Cargo Port in FL



## Cruise

### Multi-Day:

- 76,892 passengers\*
- 205 ship calls

### Daily:

- 49,054 passengers\*

#3 Cruise Homeport in the World

(\*Pandemic shutdown for 9 month of FY2021)



## Energy

- 113 million barrels
- 489 ship calls

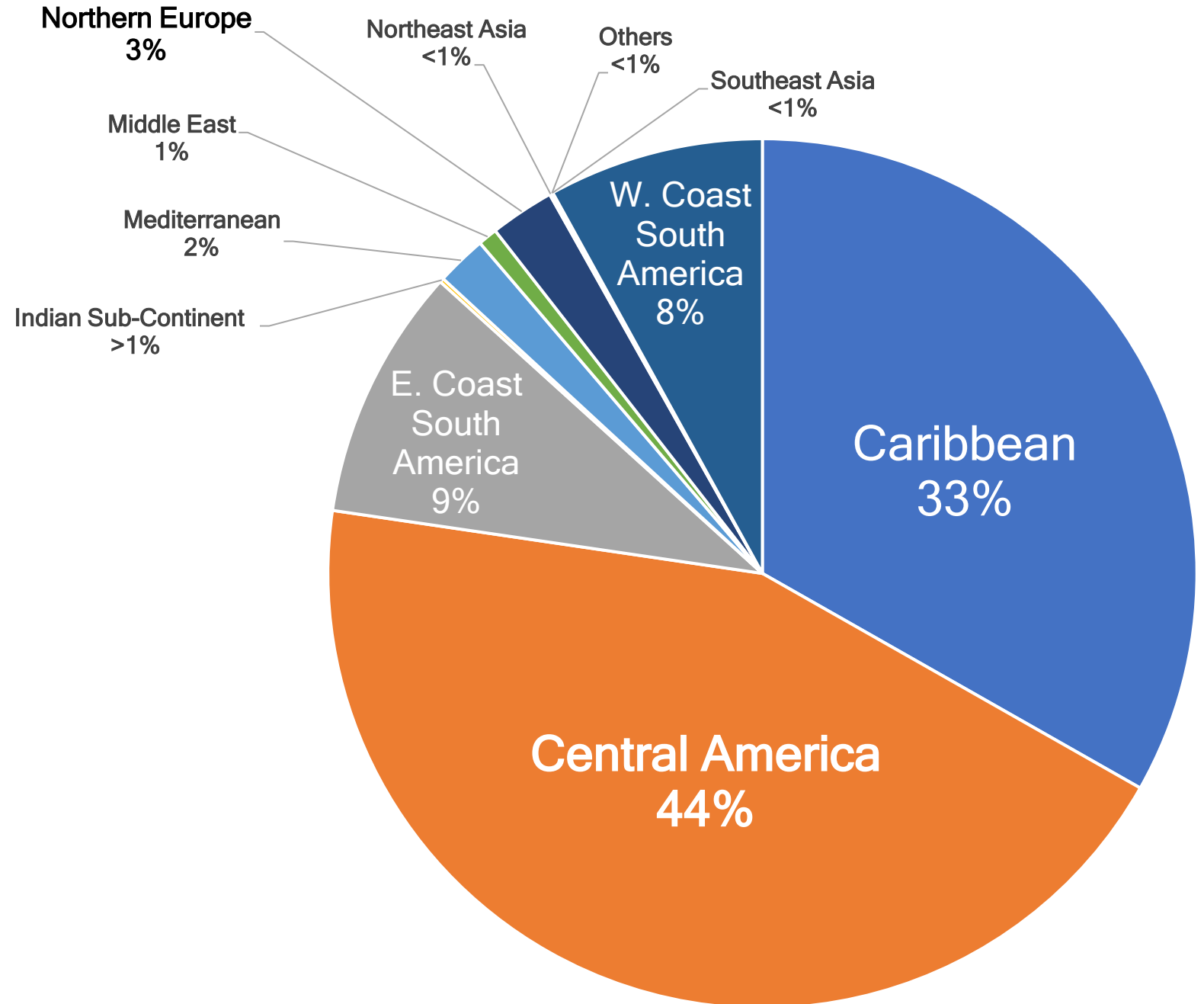
Supplies jet fuel for  
4 international airports

# Record Breaking Months

| 2021    | TEUs   | 2022    | TEUs   |
|---------|--------|---------|--------|
| July    | 91,285 | January | 97,689 |
| October | 94,588 | May     | 97,502 |
|         |        | June    | 94,106 |



# Top Trade Lanes FY2021



# How We Connect – Internationally



# Smooth Sailing Ahead for Cruise

- 7 Cruise Lines
- 1 Ferry Service



**CUNARD**

Celebrity **X** Cruises®



**Holland  
America Line**



PRINCESS CRUISES



**VIKING**  
OCEAN CRUISES

# New In 2022



## New Cruise Line



## 6 New Ships

- *Celebrity Apex*
- *Rotterdam*
- *Enchanted Princess*
- *Odyssey of the Seas*
- *Wonder of the Seas*
- *Silver Moon*



# New Business

## Coming in 2023

- Azamara Cruises
- Disney Cruise Line
- Ritz-Carlton Yacht Collection



# Pixie Dust and Imagination



# Fueling South Florida

- 12 Petroleum  
Terminal Operators

Buckeye Terminals LLC

Marathon Petroleum Co.

Chevron Products Co.

Motiva Enterprises, LLC

Citgo Petroleum Corp.

High Sierra Energy, LP

Everglades Pipeline, L.P.

Targa Downstream, L.P.

ExxonMobil Corp.

Transmontaigne

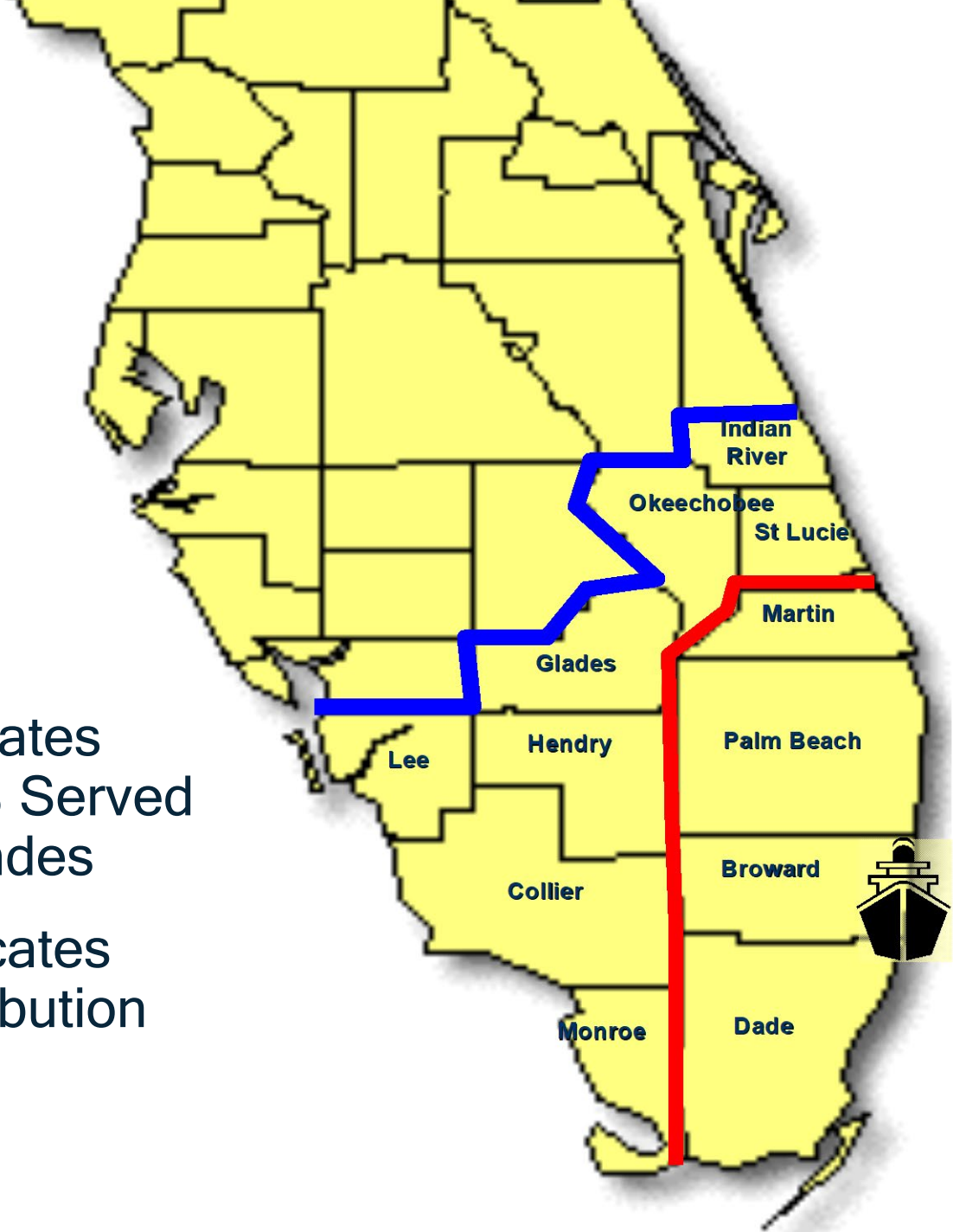
Florida Power & Light Co.

Vecenergy

# Fueling South Florida

- 12 South Florida Counties

- Red Line: Indicates Counties 100% Served by Port Everglades
- Blue Line: Indicates Border of Distribution Area



# Fueling South Florida

- Foreign and Domestic Energy Sources



# Liquified Natural Gas (LNG)



# Electrifying the Port with Shore Power



# What Makes Us Unique

## Public Art & Design

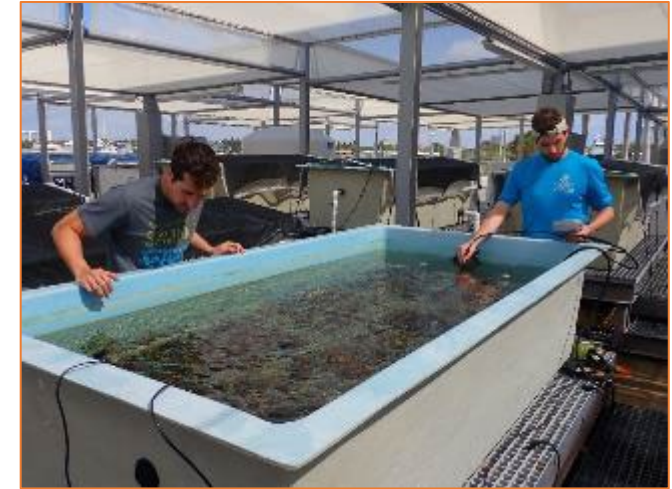
- An inspired welcome mat for our visitors
- Softens the transition between our industrial port and our seaside communities



# What Makes Us Unique

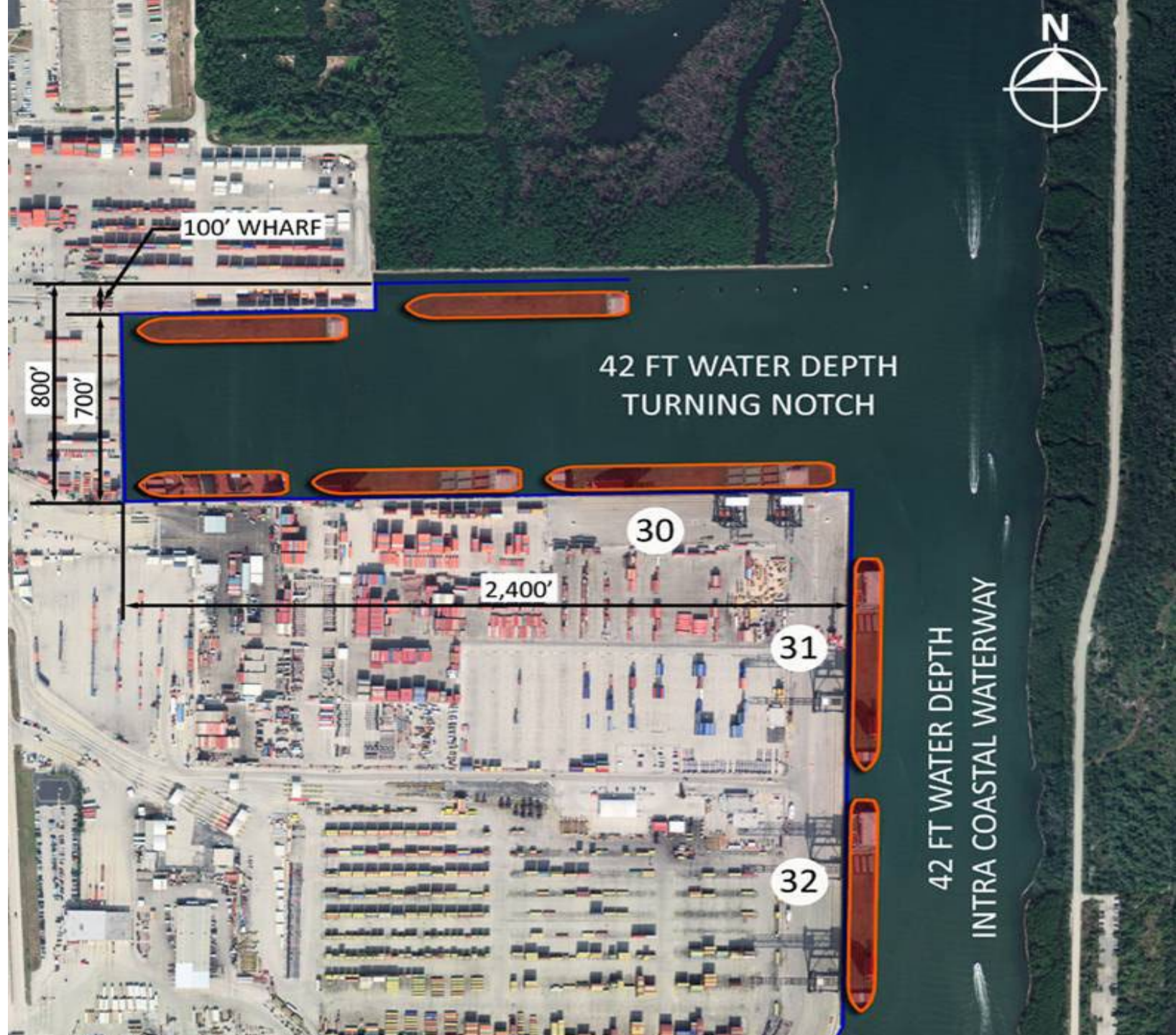
## Environmental Stewardship

- Going above and beyond compliance
- Award-winning programs
- Ecologically sensitive areas can exist in an industrial setting



# Southport Turning Notch Extension

- Lengthen from 900 ft to 2,400 ft
- Add up to 5 additional berths
- Construction began in 2014
- Total project cost is \$471 million
- Largest construction project in Port history



# Southport Turning Notch Extension

- First ship call to new berths took place
- Final project completion January 2024



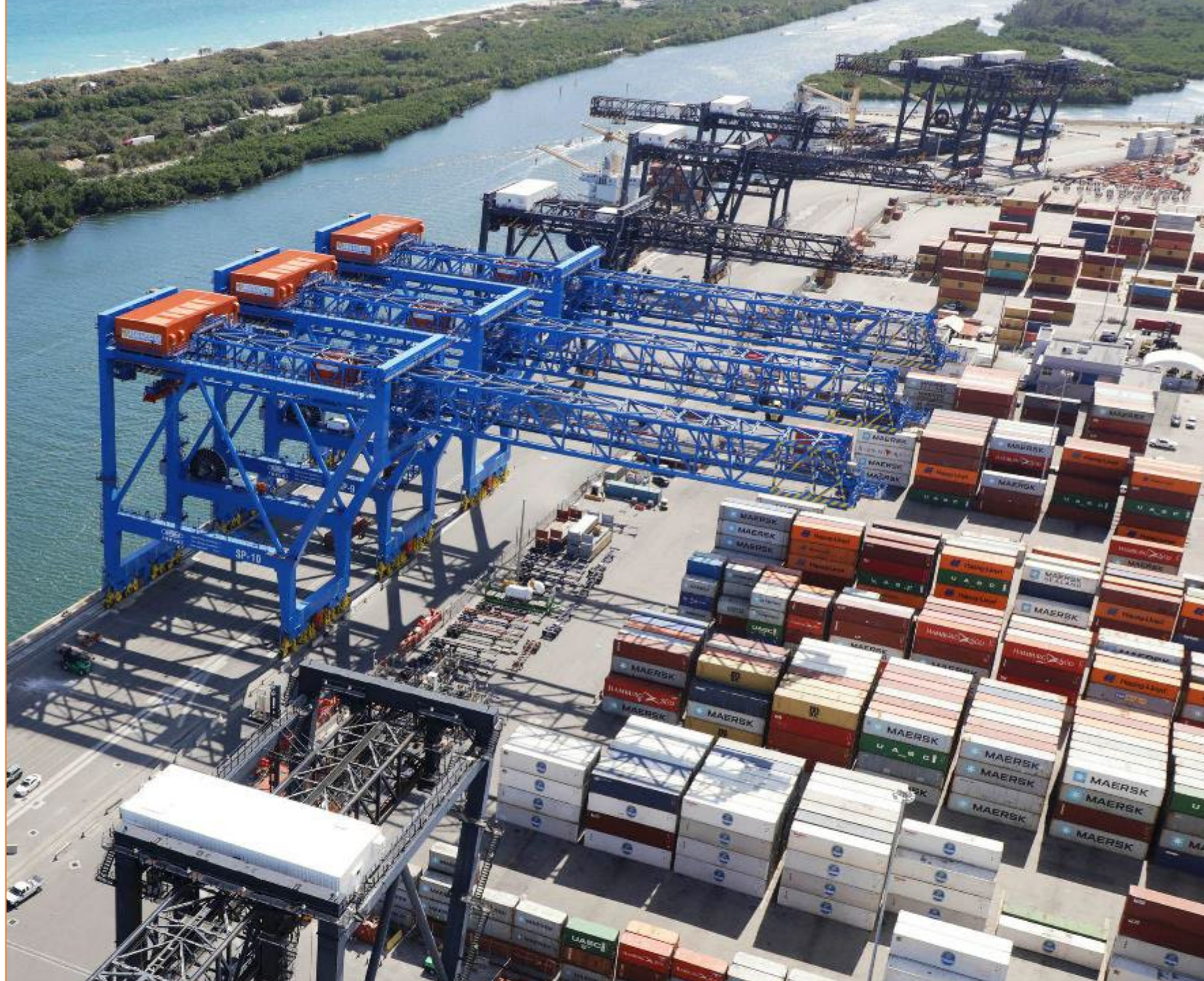
Before

Today



# New Super Post-Panamax Gantry Cranes

- Three new cranes were commissioned on March 1, 2021
- Three additional cranes are scheduled to arrive Fall 2023



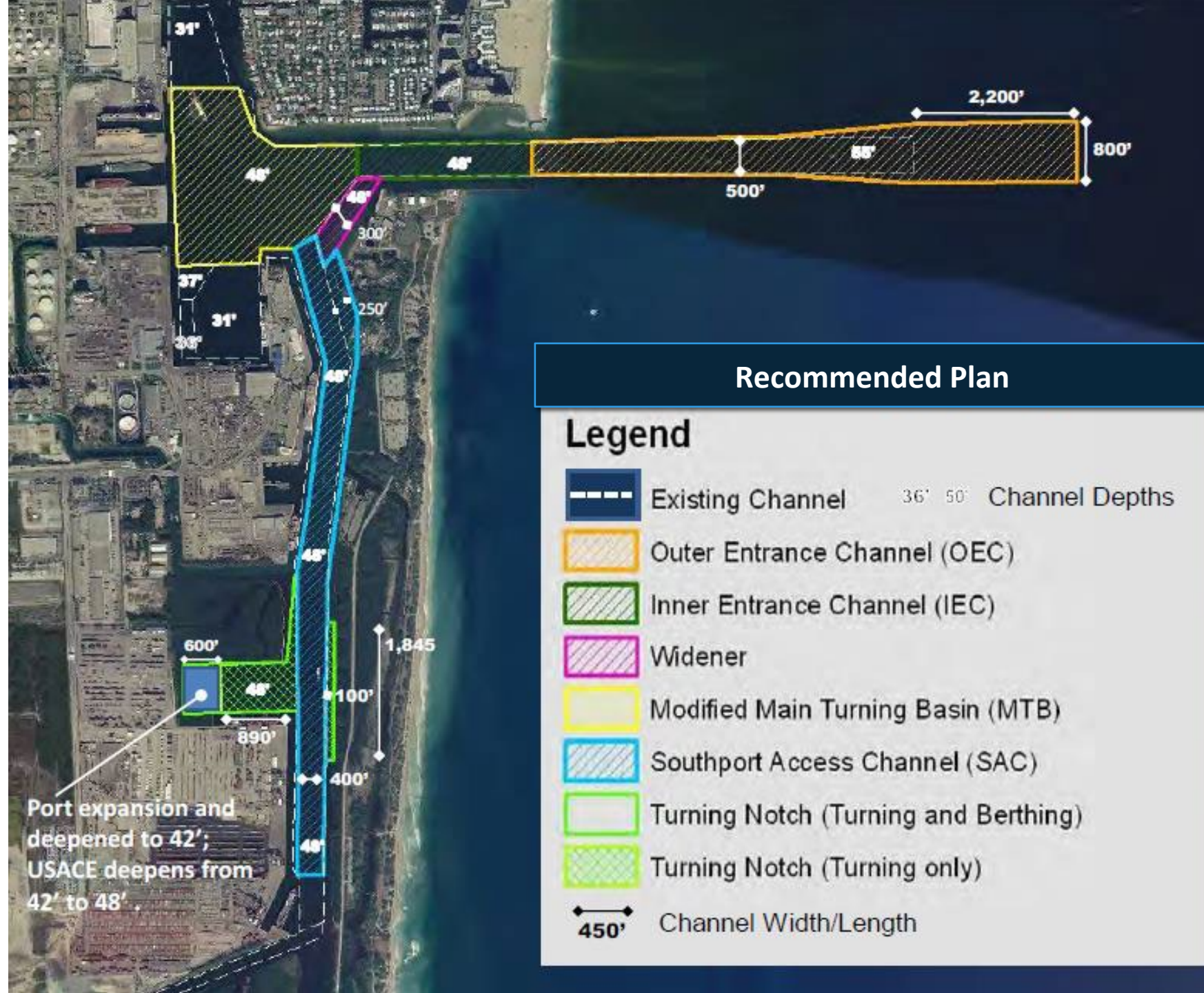
# Slip 1 Expansion Project

- Widen current berth by 150 feet
- Privately financed new manifold and piping installation phase underway
- Design phase to be completed by Summer 2022
- Construction to begin Summer 2023
- Approximate completion date is Summer 2026



# Deepening & Widening

- Deepen Outer Entrance from 45 ft. to 55 ft. and widen from 500 ft. to 800 ft.
- Deepen Inner Channel from 42 ft. to 48 ft., with an additional 1-ft. required and 1-ft. allowable overdepth for a total of 50 ft.
- Widen Southport Access Channel by 250 ft.





**PORT EVERGLADES**  
FLORIDA'S POWERHOUSE PORT



# 20-Year Master/Vision Plan Update

PORT EVERGLADES  
BROWARD COUNTY, FLORIDA  
Florida's Powerhouse Port



LIFANG  
www.lifang-cg.com Progress

# I-595 Flyover



## Website

[porteverglades.net](http://porteverglades.net)

## eMail

[PortEverglades@broward.org](mailto:PortEverglades@broward.org)



[@Port.Everglades](https://www.facebook.com/Port.Everglades)



[@PortEverglades](https://twitter.com/PortEverglades)



[@PortEvergladesFL](https://www.youtube.com/PortEvergladesFL)



[@port-everglades](https://www.linkedin.com/company/port-everglades)



[@portevergladesfl](https://www.instagram.com/portevergladesfl)

# Stay Connected With Port Everglades